

JOINT  
SOLUTION  
BRIEF

# Recorded Future for Esri



## BENEFITS

- Proactively monitor and identify location-based threats
- Respond quickly with confidence and transparency
- Enhanced insights and reporting on relevant threats to reduce risk
- Maximize your investment in Esri

## KEY FEATURES

- Recorded Future location-based risk scores, risk rules, and evidence
- Full transparency on risk evidence, including sources and sightings
- Broad source coverage in every language

## RESULTS\*

- Reduce time spent compiling reports by 34%
- Identify threats 10x faster

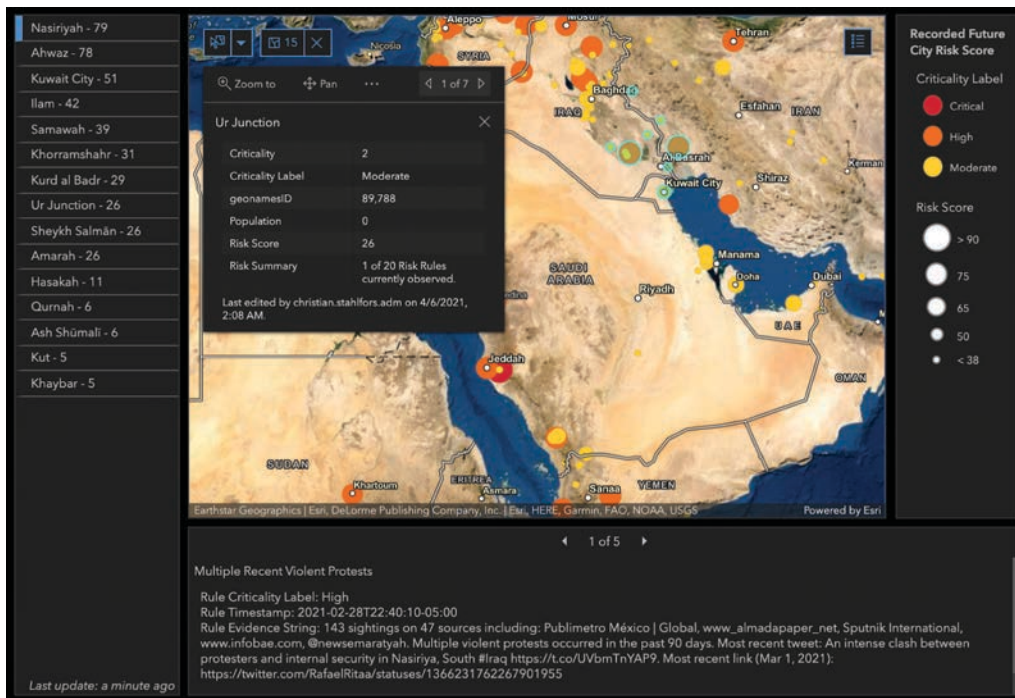
\*Learn more about the value Recorded Future brings to clients in our [IDC Report](#)

To maintain a strong security profile, organizations must continuously monitor the geographic areas surrounding their physical assets. Relevant insights, updated in real time, and visualized on Esri dashboards drive faster, more informed decisions. The Recorded Future integration for Esri delivers critical insights into the shifting dynamics of every geographic area that matters to an organization. By automatically positioning Recorded Future's geopolitical event and location intelligence in Esri ArcGIS, analysts are empowered to rapidly visualize, monitor, and respond to risks to their organization's operations and assets.

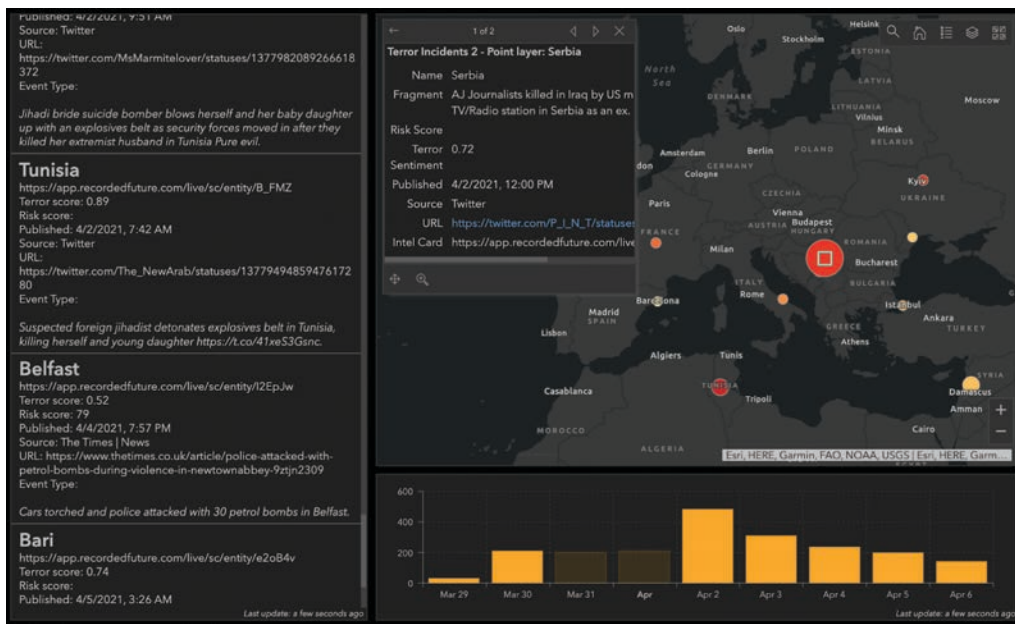
## Real-Time Geopolitical Intelligence

Recorded Future surfaces and delivers global geopolitical intelligence from the widest breadth of sources in every language, helping Esri users monitor locations in real-time and accelerate operational reporting workflows. With a sophisticated combination of patented machine learning and expert human analysis, Recorded Future fuses open source, dark web, technical sources, and original research. By dynamically translating, linking, and categorizing this intelligence, Recorded Future arms analysts with easy-to-consume, visual insights. Esri analysts can then use Recorded Future intelligence in tandem with many other data sources within their Esri instance to gain a comprehensive view of their physical threat landscape.

As new risks emerge, analysts can save valuable investigation time with evidence-driven risk scores, backed by transparent sourcing and location risk factors, including terror events, protests, disease outbreaks, and more. For deeper analysis of threats, Esri analysts can easily pivot to the Recorded Future platform, where they can conduct tailored searches with the Advanced Query Builder and filter Recorded Future's geopolitical intelligence by keywords, event types, source, time frame, and more.



View Recorded Future city risk information, driven by real-time intelligence related to terror, violent protest, armed conflict, disease outbreak, and other disruptions and disasters.



Layer Recorded Future geopolitical intelligence on recent terror events on Esri maps and dashboards for more efficient event monitoring and reporting.

**ABOUT RECORDED FUTURE**

Recorded Future is the world's largest provider of intelligence for enterprise security. By combining persistent and pervasive automated data collection and analytics with human analysis, Recorded Future delivers intelligence that is timely, accurate, and actionable. In a world of ever-increasing chaos and uncertainty, Recorded Future empowers organizations with the visibility they need to identify and detect threats faster; take proactive action to disrupt adversaries; and protect their people, systems, and assets, so business can be conducted with confidence. Recorded Future is trusted by more than 1,000 businesses and government organizations around the world.