

DATA
SHEET

Recorded Future for ServiceNow

Third-Party Risk Management

Stay ahead of third-party risk with third-party intelligence powered by patented machine learning and artificial intelligence. Recorded Future integrates with ServiceNow's GRC solution to deliver real-time risk insights and enhance third-party management.

Faster Onboarding Assessment

Recorded Future's integration provides a unique combination of automated data collection and human analysis, generating a proactive view of emerging risks to each third-party organization. Third-party intelligence arms risk and security teams with the tools necessary for comprehensive, real-time third-party risk assessment and management.

With the Recorded Future integration, risk management teams can access real-time cyber risk scores, risk indicators, and supporting evidence, directly in ServiceNow. This helps risk teams validate the accuracy of partner-provided questionnaires, assess the company's holistic risk standing, speed up due diligence, and more confidently onboard new third parties.

Real-Time Continuous Monitoring

With Recorded Future's Third-Party Risk Management integration for ServiceNow, risk management teams continuously monitor for risk intelligence on every third-party organization in their ecosystems. Gain real-time insights into important sources of information — including security incidents, dark web attention, and ransomware extortion — directly from a dashboard within ServiceNow.

Risk information is automatically collected from a broad range of technical, open web, and dark web sources. That information is analyzed through machine learning and natural language processes to generate a simple, quantifiable risk score from 0 - 99, representing a company's risk exposure. The risk score is grouped into 3 categories: high, moderate, and informational, enabling analysts to quickly determine which third parties present the greatest risk.

Smarter Risk Remediation

Recorded Future's integration ties risk rules to specific threats facing the third party. This enables ServiceNow clients to know about new threats immediately, access their severity, enforce rules of engagement, and quickly address threats. Newly surfaced risks can also automatically trigger a new risk assessment.



BENEFITS

- Gain a real-time, objective view of third party risk profiles
- Identify more third-party threats before impact
- Respond quickly with the detailed evidence required to understand and act on risk events
- Increase risk management team efficiency
- Maximize your investment in ServiceNow

FIND RECORDED FUTURE IN THE SERVICENOW APP STORE

This integration requires:

- A deployment of the Recorded Future Third-Party Intelligence module
- Recorded Future API access

For example, when a third-party risk is surfaced, full transparency behind risk rules gives risk teams the specific intelligence they need to address the issue with the third party based on their internal policies. By eliminating the need to manually research and aggregate information on risks to third parties, risk management teams can reduce investigation time and mitigate issues faster.

Results

Replace Reactive Risk Management with Proactive, Real-Time Monitoring

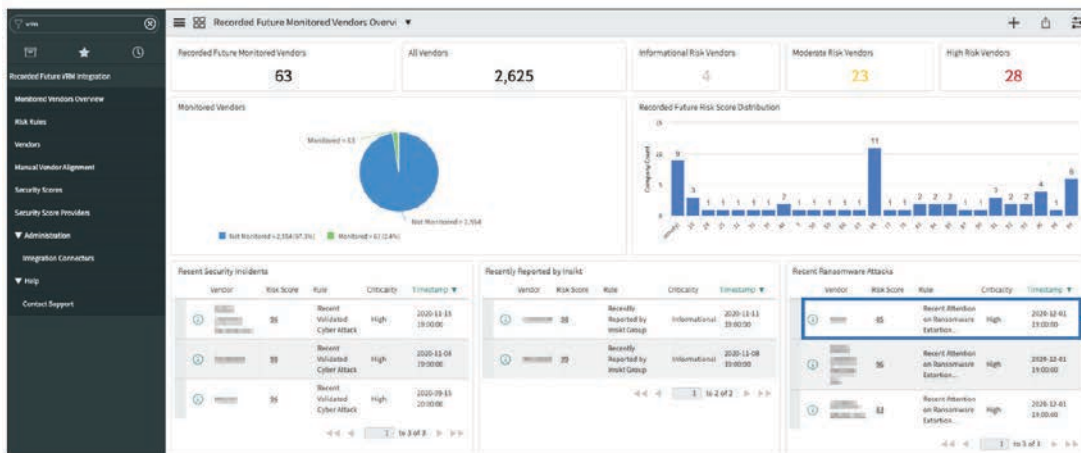
Questionnaire-based approaches to third-party risk are valuable, but these static assessments capture just a single point in time and are prone to error. Stay ahead of your third parties with proactive third-party intelligence.

Complete Risk Assessments 50% Faster

Contextual, real-time security intelligence on third parties empowers third-party risk teams to make fast, informed decisions. Transparent context and access to the evidence behind triggered risk rules enable you to quickly remediate risk and confidently move forward with your high-value third-party relationships.

KEY FEATURES

- Risk Scores updated in real time for fast prioritization and remediation of risk
- Transparent evidence for transparency and quicker analysis
- Automatically trigger new risk assessments based on triggered risk
- Manage company Watch Lists directly within ServiceNow



ABOUT RECORDED FUTURE

Recorded Future is the world's largest provider of intelligence for enterprise security. By combining persistent and pervasive automated data collection and analytics with human analysis, Recorded Future delivers intelligence that is timely, accurate, and actionable. In a world of ever-increasing chaos and uncertainty, Recorded Future empowers organizations with the visibility they need to identify and detect threats faster; take proactive action to disrupt adversaries; and protect their people, systems, and assets, so business can be conducted with confidence. Recorded Future is trusted by more than 1,000 businesses and government organizations around the world.