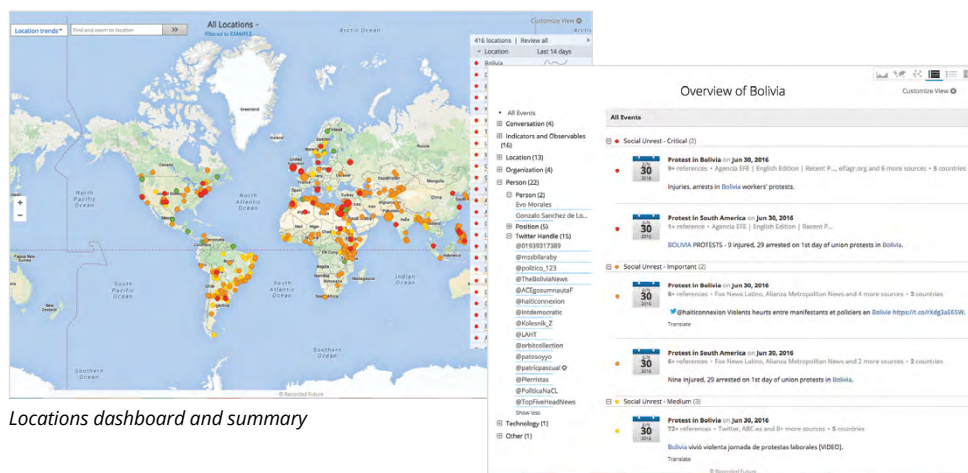


Recorded Future for Corporate Security

Alert, analyze, and prioritize risks to your property, people, and supply chain.

Intelligence From the Web Updated in Real Time

Leading global companies face new and fast emerging security threats. Groups seeking to pressure corporate executives or disrupt your business operations can use web tools and social media to rapidly organize malicious groups, research your business in detail, and attract allies to amplify their messages online. Easy access to detailed corporate and employee personal information increases the risk of severe incidents like physical confrontations and social engineering attacks. Recorded Future Corporate Security applications allow security professionals to track these threats in real time. These tools deliver early warning signals and indicators of events that may impact your physical business locations, critical supply chain facilities, personnel, or products.



Locations dashboard and summary

Data Overload

Public sources offer valuable signals about these emerging threats, as well as other threats to workplace safety and business continuity. Unfortunately, the massive volume and noise of the web challenge security analysts to find and assess critical information. Today's important signal could be in niche publications, blog posts, social networks, or buried in local news media. Small teams struggle to keep pace with the tsunami of web data that requires continuous monitoring and sifting.

Filter the Noise, Reveal the Signals

Automated data collection is an obvious necessity to keep abreast of the constant stream of information coming from your sources of interest, and to ensure a key posting or reference isn't missed. But this introduces a high degree of "noise" (information that is not useful or has only marginal value). That means teams also need a way to automate real-time analysis

Highlights

- Our patented Web Intelligence Engine unlocks predictive signals on the web.
- Application risk rules are tuned specifically to your organization's security profile.
- Real-time reporting from news, blogs, and social media gives you global awareness.
- Geolocated collection for your locations provides you with targeted monitoring.
- Locations and executives dashboards increase situational awareness.
- Geofences defined as needed give you precise targeting for investigations and alerts.
- Our multi-year archive gives you access to over 750,000 web sources and billions of data points.

of the data streams, including de-duplicating data points, identifying key terms and entities, and triggering alerts when specific rules are met.

Corporate Security Applications

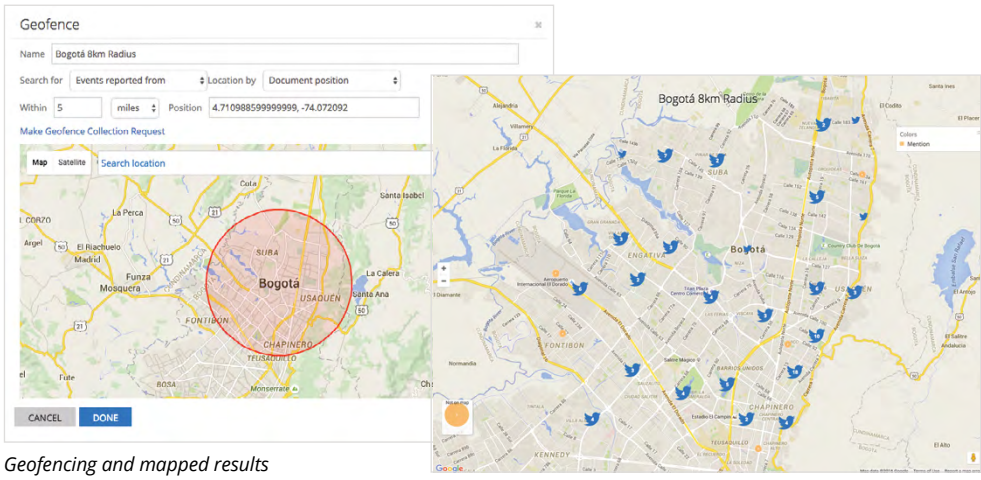
Our capabilities for corporate security are delivered via two applications: Recorded Future Locations and Recorded Future Executive Protection. These products highlight risk factors, both specific to your organization and general hazards. The signals are presented in dashboards, organized by locations (facilities, venues, travel destinations) or executives and severity (critical, important, etc.)

Configuration and Analysis

Recorded Future Corporate Security applications simplify recurring assessments by monitoring the web for risk signals related to your business assets and personnel. Custom alerts are combined with a sophisticated analyst toolkit for in-depth web analysis. Each application is carefully tuned to your security profile and includes statistically baselined risk indicators for relevant assets and locations. These simple status indicators surface emerging threats, which analysts can assess with a single click. These assessment views provide the details linked back to original sources, and are updated continually as additional details emerge. And when it comes time to contextualize a threat, each analyst is provided a set of tools to investigate the open web and discern real threats from the noise. All of this adds up to your team being better prepared to investigate current threats while also identifying future events with the potential to impact your business.

How It Works

Powered by machine learning and natural language processing, Recorded Future's unique technology can extract signals describing the location and timing of events, as well as the parties involved, from over 750,000 web sources. These streams of information are filtered, scored, and analyzed based on your tailored corporate security profile, before packaging the relevant threat signals into an application for security alerting, assessment, and analysis.



Geofencing and mapped results

About Recorded Future

We arm you with real-time threat intelligence so you can proactively defend your organization against cyber attacks. With billions of indexed facts, and more added every day, our patented Web Intelligence Engine continuously analyzes the entire web to give you unmatched insight into emerging threats. Recorded Future helps protect four of the top five companies in the world.